



GPS Handheld

Quick Start Guide



Thank you for purchasing our device! We hope it will satisfy your expectations and you will enjoy its particular features. Please, find few minutes to read the Quick Start Guide before beginning to work with H3000

INTRODUCTION

H3000 is a mobile phone with integrated GPS receiver. The device is designed for tracking and protecting people, cargo and other things. GPS receiver allows tracking the coordinate of the device and forwarding them to authoritative person or Monitoring Center. The device has a voice transferring possibility, therefore, it can be used as ordinary mobile phone.

CONTENTS of PACKAGE

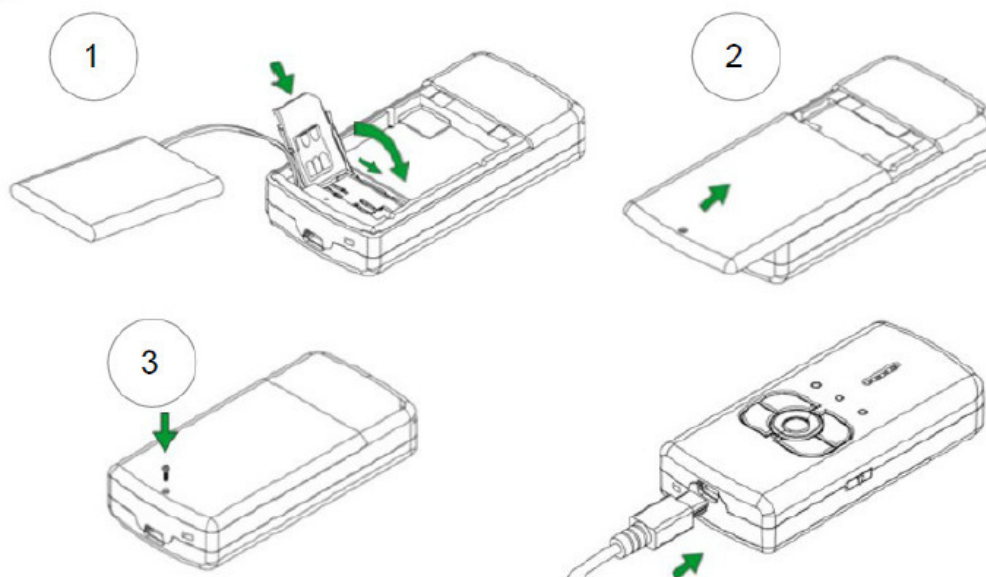
H3000 device.

- „USB – mini USB“ cable.
- CD with User's Manual and software.
- Description of the device "Quick Start Guide".

NOTE: the producer does not provide a SIM card among other items of the package, which is necessary for connection to GSM network! You can obtain a SIM card from your local GSM service provider!

If any of the components are missing, please contact the manufacturer or your local distributor.

DEVICE ASSEMBLING



DEVICE CHARACTERISTICS

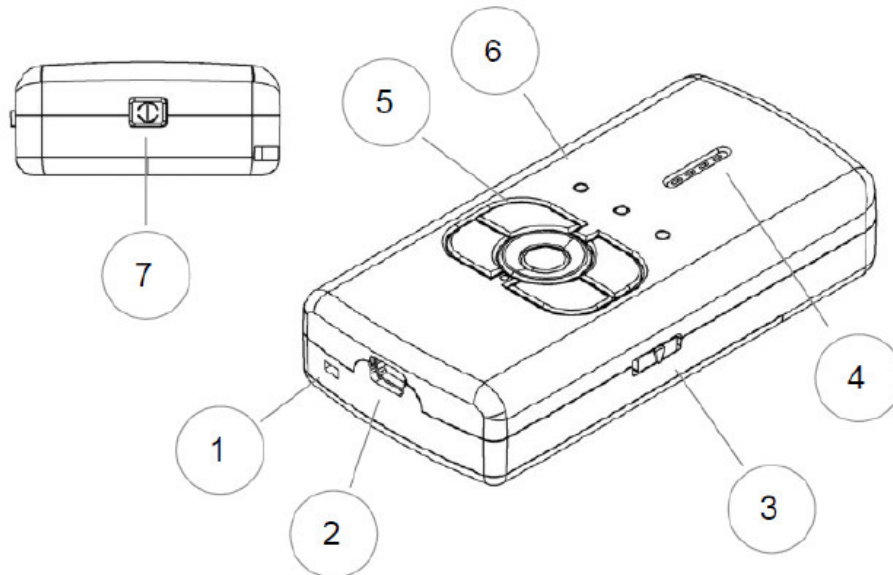
H3000 housing is made of plastic.

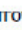
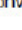


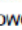
GPS Antenna: Internal.
GSM Frequency: GSM 900/1800 MHz and 850/1900 MHz.
Voice Call: YES.
Data Transferring: SMS.
Connecting to PC: USB.
Configuration: SMS or USB.
Internal Memory: 1MB.
Buttons: 4 (ALARM, CALL1, CALL2, SMS).

Accumulator: Li-Ion or Li-Pol
LED Indicator: 3 (Power, GPS, GSM).
Dimensions [mm]: 111 x 57 x 21.
Indication
Standby time GPS module switched OFF: 336 h.
Working time on „Track“ mode: 6 h.
Working time with periodical GPS module switching (Period: 1 h.): 120 h



FUNCTION PARTS of DEVICE




- | | |
|--------------------|--|
| 1 – Microphone | Microphone is used for voice conversations. |
| 2 – USB port | Connect mini USB cable to the device and the PC to configuration Handheld GPS and charge the battery. |
| 3 – Key lock | To lock the keyboard, move the arrow to  , to unlock move the arrow to  . |
| 4 – Speaker | Speaker is used for active voice conversation – to be able to hear the talker and for incoming call signal. |
| 5 – Keyboard | You will enable or disable the set functions by pressing the buttons. |
| 6 – LED indicators | LED indicators will let you know in what mode the device is operating.
 - Power indicator,  - GSM indicator,  - GPS indicator. |
| 7 – ON button | To turn the device on, press and hold the button until Power LED indicator turns green. You can change voice volume by pressing buttons on device keyboard. That buttons are marked with color circles. Button with orange circle voice volume will up and with blue circle voice volume will down. |



GETTING STARTED

For more detail instruction please read User's Manual.

- Insert a SIM card.
- Install the required drivers and software on your PC. (Chapter Software installation)
- The internal battery of the device has to be fully charged. (Usually it can be charged by connecting the device to the PC through the USB port, but you also can charge it using other accessories).
- Switching ON the device: In order to do this connect device to USB port and it will switch ON automatically. Another way is to push and hold the button located on top of the device until green  LED turns on, release the button when LED glows. (The first time before you turn ON the device is recommended to press restart button. It is located in the hole behind alarm button.)
- Set device parameters with the "GPS" Software.

NOTE: (Recommended) SIM card is used with deactivated PIN code request. The PIN code request can be disabled with the help of another mobile phone.



MINIMAL REQUIREMENT

Operation system	MS Windows 2000 SP3 or MS Windows XP SP1
http://www.microsoft.com	
Hard Disc Space:	20 MB
Screen Resolution	1024 x 768 (Full Screen)
Windows Installer v.	3.0



REQUEST SMS LIST

Sending SMS to device with text written in the list below you can activate special function of device.

NOTE: The text for activating special function is not case sensitive. So you can type the message either in uppercase or lowercase.

Fix?	To get location of your device
Geo?	To get location what Geo- fence zone device in
Spy	To make Silent Call. The device will call you.
Alarm:on	Activate the Alarm
Alarm:off	Deactivate Alarm function
Inf?	To get battery level, Firmware version of device
Track?	To send data to the server via GPRS.
Track:on,x,y	To turn on the track function x – track update interval (sec.), y – track logging duration (min)
Track:on	To turn on the track function with timing that was set in device before.
Track:off	To turn off the track function
Off	To turn off device



IMPORTANT



This sign on the package means that it is necessary to read the User's Manual, which is on the CD, before you start using the device.



This sign on the package means that all used electronic and electric equipment should be stored separately.



FINAL NOTES

For more detailed information about the device, please read the documentation which is found on the CD. If you encounter any problems using the device and you are no able to solve them yourself, please contact our technical support department